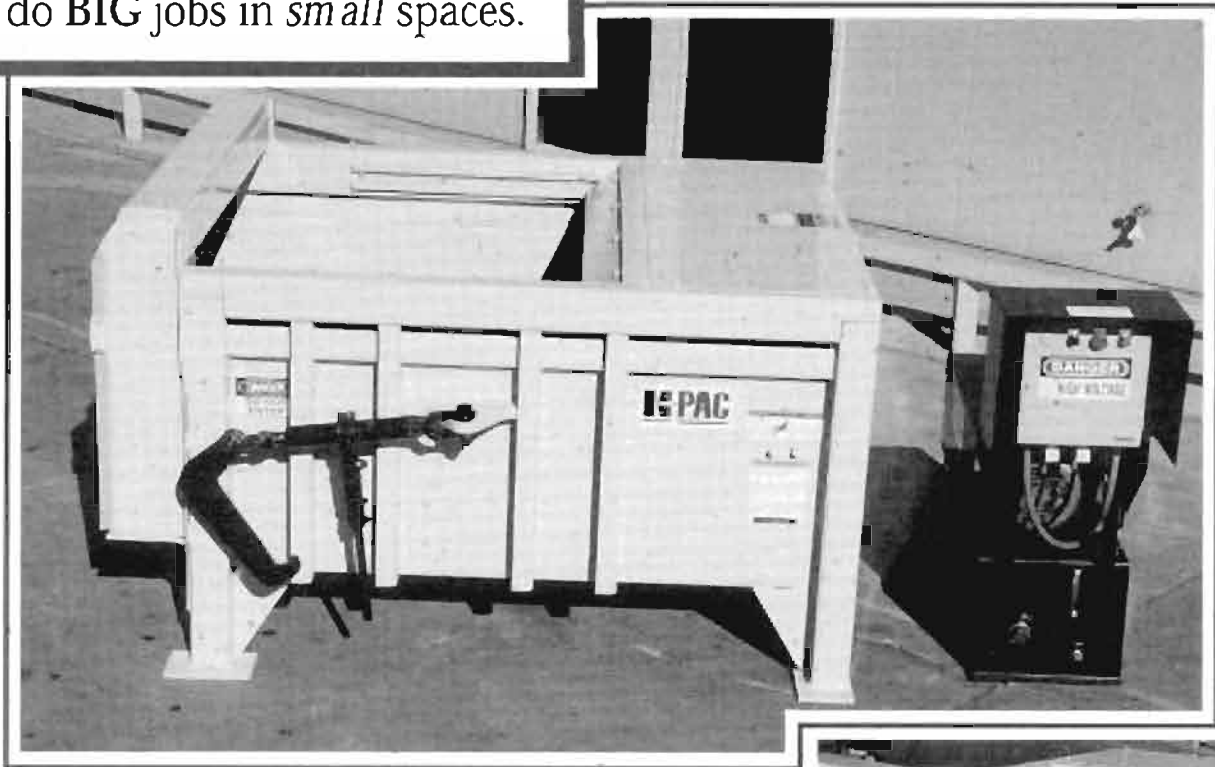




STATIONARY COMPACTORS

KP2 SERIES "STUBBY"

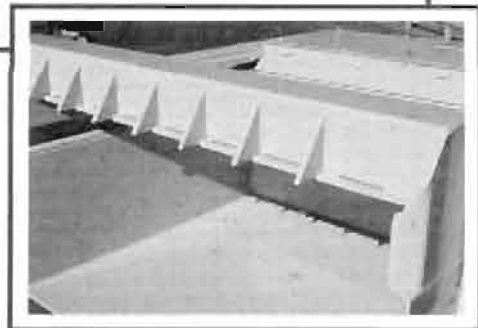
When you're in a tight spot, turn to the K-PAC Stationary "STUBBY", KP2 Stationary Compaction Units designed to do **BIG** jobs in *small* spaces.

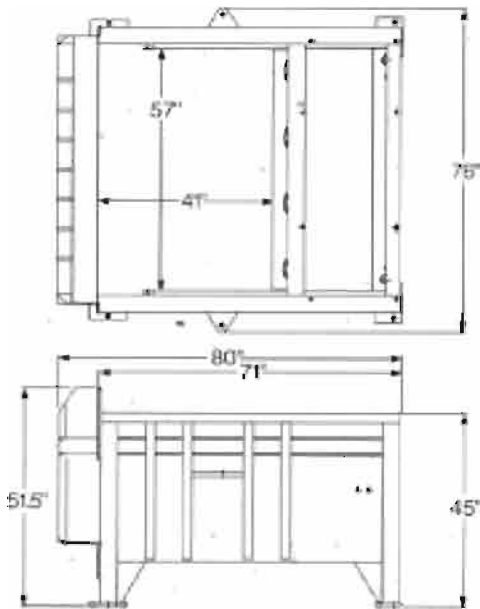


K-PAC Equipment, a division of Scanton Mfg. Corp., has established itself as a leader in innovation and dependability in the waste equipment industry. From engineering to production, K-PAC is committed to providing top quality equipment and service.

The K-PAC KP2 Stationary Compactor is affectionately called "The Stubby." Its design is a K-PAC engineering masterpiece.-

Other manufacturers have tried to match its space saving features, but nothing in the industry comes close. The overall length of 71 inches enables the KP2 to fit snugly against any structure. This design addresses valuable space requirements and dramatically reduces installation costs. Through-the-wall installation costs are also dramatically reduced thanks to the shorter feed chutes which require less installation materials. Special Orkot wear blocks on the four cast iron guide shoes of the packer blade provide longer wear life, reducing expensive floor and side wall repair costs. The "Stubby" is ideal for all your waste compaction applications, from K-PAC Equipment, **"THE TREND SETTERS..."**





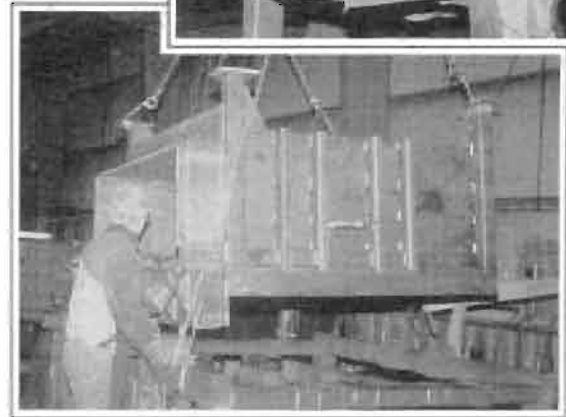
*"The Stubby"
fits snugly
against any
structure,
dramatically
reducing
installation
costs*

KP2 STATIONARY COMPACTION SPECIFICATIONS

	KP2
Cleartop Opening	41" x 57"
Ram Penetration	13"
Cylinder Size	2 - 4" x 37" Diagonal
Floor	.38 AR Plate
Compactor Sides	.25 Plate
Ram Top	.38 Plate
Ram Face	.25 Plate
Power Pack HP	10 HP
Cycle Time	34 Sec
Norm. Force	46,800#
Max. Force	51,150#
Norm. PSI	2,150 PSI
Max. PSI	2,350 PSI
Pump Size	12 GPM
Res. Size	20 Gallons
Weight/Complete	3,675 lb.
Power Pack	10 H.P. T.E.F.C./ 3 Phase 230/460 Volt 60 Hertz



*Fixtured for
quality from
beginning
to end*



Scranton Mfg Corp
PO Box 336
101 State Street
Scranton, IA 51462
Telephone 712 652 3396
Fax 712 652 3399
Toll Free 800 831 1858

Continued product improvement is a K-PAC goal. Therefore, we reserve the right to make any changes in illustrations, specifications, equipment and prices. All K-PAC Compaction Units Conform to applicable ANSI Z245.2 safety standards.



WASTE EQUIPMENT
TECHNOLOGY ASSOCIATION



ENVIRONMENTAL PROTECTION
AGENCY

